



# Altrusa Action

MONTHLY NEWSLETTER OF ALTRUSA INTERNATIONAL, INC. OF CENTRE COUNTY, PA  
MARCH, 2007

**Dinner Meeting:** Wednesday, March 21, 6:00 p.m., Celebration Hall, \$14.00

**Menu:** The buffet will feature Chicken Stir-Fry and Smoked Ham

**Program:** "Fund Raising", lead by the Board

**Reservations:** Please call to make a reservation or to cancel a standing reservation. Call Barb (238-8882) or email her ([brk@psu.edu](mailto:brk@psu.edu)) by the evening of Sunday, March 18<sup>th</sup>.

## PRESIDENT'S MESSAGE

Dear Sisters and Brothers in Altrusa:

I can't begin to tell you how honored and proud I am with the slate of officers that have agreed to stand for election in March. These women represent some of the most intelligent, compassionate, resourceful and active women I know. I am particularly thankful to Mildred, who has served her term on the board many, many times, for agreeing to stand for election as Director. Both the current Board and the Nominations Committee requested that I approach her so that we would have a long-term member who could sit with us and provide continuity from past decisions and events, through to present needs and management. Her willingness to commit to one more round of meetings is demonstrative of her own care and compassion for both Altrusa and our membership. Happily, she will serve with another woman who demonstrated her own care and compassion in her fervor to become an Altrusan, DieLisse Dunkleberger. DieLisse was a strong supporter of Mystery Night and of our other work long before she became a

member. I will never forget the day she showed up hours early to help set up for the Mystery Night event, and her excitement in learning about our work.

It is my hope that you will consider your vote for these women carefully and, in voting for them, promise both yourself and others to support them in their decisions and hard work. In doing so, I am certain you will remember the many hours of preparation and thought they have put into proposals and actions, their desire to take positive action, and their commitment to sustaining both Centre County Altrusa, and Altrusa as a whole, as strong, vibrant organizations.

On that note, the club is buzzing with several major events -- Spring is always so alive with activity! The final push for Mystery Night sales and gifts is on, the need to organize and register for District conference looms, Spring Fling is just around the corner, and registrations for our UN Trip are soon due. As a result of the activity and bustle, I have no doubt that something important will be forgotten. Perhaps it will be a needed thank you, or an important piece of paper, or a congratulatory hug. Please, do your best not to forget, but if you do, take quick steps to make amends. And, for those of you are on the receiving end of the forgetting, please don't take it personally but instead respond with compassion and forgiving. After all, isn't that what Altrusans are all about?

Yours in Service,

*Tammy.*

President: Tammy Gentzel  
[TamGentzel2@cs.com](mailto:TamGentzel2@cs.com)  
P.O. Box 1232  
State College, PA 16801

Editor: Barb  
Production: Tammy  
Distribution: Alice & Micki

## ***ELECTION OF CLUB OFFICERS***

The following women have agreed to stand for election to the Board of Altrusa International of Centre County, Inc. The election will take place at our regularly scheduled business meeting, Wednesday, March 17, 2007.

President: Becky Schrope  
First Vice President: Jill Lillie  
Second Vice President: Gini Tucker  
Recording Secretary: Tammy Gentzel  
Corresponding Secretary: Tillie Convery  
Treasurer: Doris Conner  
Directors (2006-2008): Cindy Butler,  
Charlotte Zmyslo  
Directors (2007-2009): Mildred Meder,  
DieLisse Dunklebarger

## ***BUSY COMMITTEES***

***Communications*** – Theresa, Chair

- The committee is scheduled to meet on Tuesday, May 29th, 5:30 p.m., at Meyer's Dairy.

NEWER ALTRUSA MEMBERS, if you are nearing the end of your one-year mentorship with your sponsor and are ready to switch committees, please consider joining us!!

Advantages to serving on the Communications Committee: we only meet on the fifth Tuesday of the month (which means about once every quarter); all of our other work is done by E-mail; we get to experiment with modern technology and mechanisms for getting the word out about Altrusa and the work we do; we have lots of fun; and we meet at Meyer's Dairy (you know, home made ice cream?).

- ALL ALTRUSA MEMBERS, if you have recently changed ANY of your contact information (E-mail, phone, address, etc.), and you are certain that it will not change prior to August, please forward the new information to Tammy at [TamGentzel2@cs.com](mailto:TamGentzel2@cs.com). It is, indeed, time to start compiling information for the 2007 Yearbook. Thank you!

***International Relations*** – Jill, Chair  
The United Nations General Assembly,



composed of delegates from every Member State, celebrates **International Women's Day** to recognize that peace and social progress require the active participation and equality of women, and to acknowledge the contribution of women to international peace and security. This special day is celebrated on March 8th, and a flyer was distributed at the club meeting on February 21st about this day that we should all celebrate every year! Please read it, if you haven't already.

***Membership*** – Gini, Chair

To make sure that everyone realizes we miss them when we don't get a chance to see them, the membership committee has instituted a system of reaching out to those who have missed two business meetings in a row. Our purpose is simply to make sure everything is okay and to say we miss you.

Some from the committee will be meeting with the "newer" members (June '06 initiates and since) at 5:30 on March

21, right before the dinner meeting. Our purpose is to organize the effort to make and distribute advertisement posters for the PA Reads events going on in April. We also will be distributing books to various sites such as CVIM and YMCA. If you are one of the "newer" members, please make every effort to show up. The purpose of the project is two-fold. First obviously is to get the word out about a great program, and second, to give those who have joined Altrusa recently the opportunity to get to know each other.

**Service** – Jennifer, Chair

No report, except for the projects being carried out by newer members, described in the Membership report, and the Spring Fling notice that follows.

***DON'T THROW IT AWAY!!***

The Youth Service Bureau Spring Fling is Saturday, April 14, 2007 at the Penn State Ag Arena. You can help in two ways. First, clean out those closets, basements and attics and make a donation. Donations will be accepted **Thursday, April 12** from 8 a.m. to 8 p.m. and **Friday, April 13** from 8 a.m. to noon. Items needed are: Furniture, house wares and linens, sporting goods, small appliances, CDs, computers, videos, toys, children's and adult clothing, lawn and garden items, and holiday items, jewelry and accessories. If you have furniture too big to drop off, just call Jenn at 237-2224 x125. These items will be picked up on the twelfth.



The other way you can help is by volunteering to help your fellow Altrusans

man (and woman) the women's clothing section. We'll be getting an e-mail out to everyone the first of April. Be on the lookout and mark your calendar. We'll ask that you sign up for at least a 2-hour shift. That begins Thursday before the sale at 8:30 a.m. until 8 p.m.; Friday 8 a.m. until 4 p.m., and sale day from 7:15 a.m. – 1:15 p.m. If you signed the sheet at the last meeting, we have your information.

This event benefits the Big Brother Big Sisters Program, and they need our help!

***DISTRICT TWO NEWS***

In order to help the District increase non-dues revenue, Governor Silvia Silverman has put a link to Amazon.com on the District Two Website. Please use it if you plan to make any on-line purchases – **the District will receive a percentage of all sales that are made through the link on our site.**

The District Website has been greatly improved, and all of us who have Internet access should check it out soon at <http://AltrusaDistrictTwo.homestead.com>. (There are a few problems at the moment that should be fixed in short order.) It has pages on Goals, Foundation, District Officers and Chairmen, a Directory (of Club Presidents), ASTRA, Conferences and Conventions, Web Guidelines, Forms, a Chat Room, and the Governor's Message page. The link to Amazon.com is currently on the home page.

Other links on the home page are to the websites of eight clubs in District Two (including ours, of course). It's interesting to follow these links and find out what these other clubs are doing.

Your editor personally uses Amazon.com frequently to buy books, videos, etc. and have found it very easy to use and very reliable. I intend to use the District's website to access it from now on. Amazon itself has an enormous stock of almost anything you'd want, and it also provides other sources of items if Amazon doesn't have what you're looking for. **The District's budget is extremely tight, and your help in providing a little extra income will be much appreciated.**

## ***THE ENVIRONMENT COLUMN:***

### **Planters (Container Gardens)**

Planters reduce impervious cover (impenetrable surfaces, such as concrete sidewalks, parking lots, etc.) by retaining stormwater runoff rather than allowing it to drain directly into nearby sewers and creeks. Planters offer "green space" in tightly confined urban areas by providing a soil/plant mixture suitable for stormwater capture and treatment. They can be used on sidewalks, parking areas, back yards, rooftops and other impervious areas.

#### **Contained Planters**

Contained planters are used for planting trees, shrubs, and ground cover. The planter is either prefabricated or permanently constructed and has a variety of shapes and sizes. Planters may range from large concrete planters to potted plants arranged on an impervious surface. Planters can be placed on impervious surfaces like sidewalks, back yards, rooftops, or along the perimeter of a building in order to catch stormwater runoff from the roof. Contained planters may drain onto impervious surfaces through holes in their base or have an

overflow structure so the plants do not drown during larger rain events.

Plants should be hardy and self-sustaining native species with little need for fertilizers or pesticides. Planters can be made of stone, concrete, brick wood, or any other suitable material. However, treated wood should be avoided if it leaches any toxic chemicals.

Planters can be permanently fixed in place, or easily moved around to enable you to change the look of the planter garden that you have created. Numerous manufactured pots and planters are available at your local hardware or landscaping store. You can create a "do-it-yourself" planter or use recycled items to create planters.

Homemade planters may be constructed by stacking and fastening wood beams or laying and mortaring stones. There are many websites with detailed instructions to help with this type of project, such as [www.taunton.com](http://www.taunton.com), [www.hgtv.com](http://www.hgtv.com), and [www.diynetwork.com](http://www.diynetwork.com)



#### **Creating a Contained Planter**

1. Purchase planters at the local hardware or landscaping store, if you are not building your own planter box.
2. Drill holes in the bottom of the planter if they are not already there.
3. Fill the planter with soil and leave a 12-inch area from the soil to the top of the planter.

4. Choose native drought- and saturation-tolerant plants and trees to plant in the planter.
5. Occasionally turn or till the soil to improve infiltration.

*Excerpted from "A Homeowner's Guide to Stormwater Management", Office of Watersheds, Philadelphia Water Department, January, 2006.*

## **CLUB MEETING MINUTES**

February 21, 2007

The meeting was called to order by Barbara Kautz, President *pro tem*, who led in the Altrusa Grace.

Seven guests were introduced: Gini's guest Kim Townsend; Nancy's guest Linda Calaliba; Cynthia's guest Sally Rothwell; Marge's guest Sherry Evans; Jill's guests Marianne Hogg and Jan Becker; and Karen's guest Robert Brand.

**Altrusa Accent:** Ginny Tucker presented the accent based on the 6<sup>th</sup> and 7<sup>th</sup> Principles of Altrusa defined by Mamie L. Bass: (6) Altrusa commends to its members an active interest in public affairs, realizing that the State is but the individual writ large; and (7) Altrusa develops true leadership, concerned with accomplishment and not with recognition.

**Approval of minutes:** Minutes of the January 17<sup>th</sup> club meeting were approved as distributed in the newsletter.

**Treasurer's Report:** Doris reported that the club had \$8,112.97 in the checking account. We have 61 members, including one life member and 3 emeritus members. She has received 31 reservations for Mystery night.

**Correspondence:** None

### **Committee Reports:**

*Communications:* None

*Finance:* Doris conducted the 50/50 drawing, won by one of our guests.

*International Relations:* Jill reminded the members of the bus trip to the United Nations on May 5, 2007. We are still collecting embroidery items for the Sierra Leone project. Our attention was called to the hand-out on International Women's Day March 8<sup>th</sup>.

*Membership:* Gini reported that new members from February 2006 to the present will participate in the Pennsylvania One Book project.

*Service:* Tillie reported on the Spring Fling participation. Ann McGlaughlin reported on the park clean-up at Walnut Springs. Persons wishing to volunteer for these projects should contact Tillie and Ann.

**Old Business:** Becky thanked members who have donated prizes for Mystery Night, and requested that members who have not done so need to contact her or June. If you need to have your prize picked up, please contact Becky or June. Members were reminded to sell tickets; we

only have 31 reservations and our goal is 200.

**Service committee proposal:** Regarding the proposal described in the February newsletter regarding the Middle School Mentoring project, a motion was made by Nancy D. that a committee of five members, including Jill as leader, should approach Park Forest Middle School to determine their acceptance of such a program. The motion was seconded by Theresa. Much discussion followed, with concerns regarding members' participation in the project. Phyllis moved to postpone the motion until the March meeting; Louise seconded the motion. The motion to postpone was approved.

**New Business:**

1. It was noted that we needed to elect Delegates and Alternates for the upcoming District Conference. After a show of hands of those planning to attend (3), Phyllis moved that Barbara, Sindy, and Ginny E. be elected delegates, with the proviso that anyone else attending from our club (who doesn't already have a vote as District Board member or Past Governor) could become the Delegate in Ginny's place and she would be an Alternate. The motion was seconded by Pam R. and was approved.
2. The nominating committee has not yet been able to prepare a complete slate of officers for next year. It is uncertain if the elections will be held in March as called for in the bylaws.

**Announcements:**

1. Pam R. announced that she was running for Judge of the Centre County Court of Common Pleas, and was carrying a petition.
2. Ann announced that she was running for State College Area School Board and was also carrying a petition.
3. Barbara reminded members to keep track of their service hours and report them to her. This is information needed for a club's application for a Distinguished Club Award, and Phyllis noted that according to the *International Altrusan*, Centre County had won the 2005 2006 Distinguished Club Award.

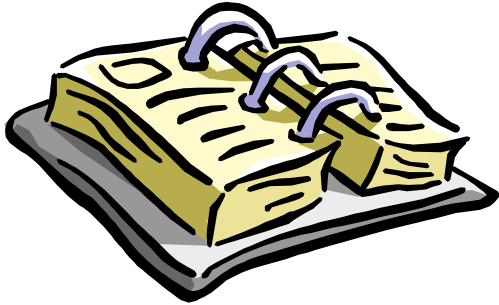
**Meeting Adjourned**

**Program:**

Altrusan Ahmed Banya gave a very interesting, but disturbing, talk on the current conditions in Sierra Leone, his home country that he had visited recently.

Sindy Butler  
Acting Recording Secretary





## ***CALENDAR OF EVENTS***

### **March**

- 6 Board Meeting
- 21 Dinner Meeting (Board)  
Program: "Fund Raising"
- 24 An Evening of Mystery and Fellowship**

### **April**

#### ***Altrusa Foundation Endowment Month***

- 3 Board Meeting
- 11 Altrusa's 90<sup>th</sup> Birthday**
- 12-14 SPRING FLING**
- 18 Dinner Meeting (Board)  
Program: "Earth Day: You Can Make a Difference"
- 27-29 DISTRICT TWO CONFERENCE, Parkersburg, WV**

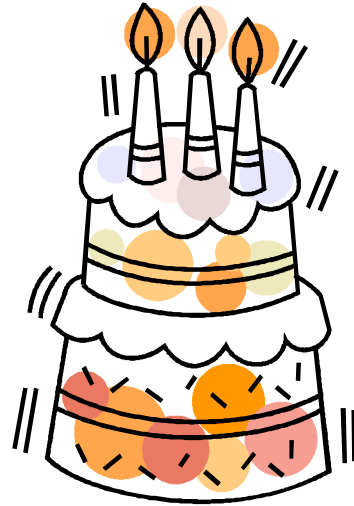
## ***BIRTHDAYS***

### **March**

- 8: Ann McGlaughlin
- 25: Sara Krumrine
- 26: Kathy Mowery

### **April**

- 7: Pam Stellabotte
- 10: Mildred Meder
- 11 Altrusa International**
- 12: Ahmed Banya
- 22: Tammy Gentzel
- 23: Pat Hawbaker
- 25: Pam Ruest
- 30: Tillie Convery



***HAPPY BIRTHDAY TO ALL OF YOU!***

# *ALTRUSA ACTION*

*March, 2007*

Altrusa International, Inc. of Centre County  
P.O. Box 1232  
State College, PA 16804

***IT'S A MYSTERY!!***



[www.AltrusaCentreCounty.homestead.com](http://www.AltrusaCentreCounty.homestead.com)